

Pacific States Marine Fisheries Commission

John Day Dam Condition Monitoring Weekly Report, #22-11

Report Period: 6/11 – 6/17, 2022

Project Leader: Rick Martinson

Prepared By: Gregory Kovalchuk and Aaron Young



SECTION 1. River Flow and Sampling Results

	Min	Max	Mean		
			Current	Last Week	2021
A. River Flow	436.6	447.2	440.1	406.3	203.7
B. Powerhouse 1	224.7	232.7	228.9	190.4	92.0
C. Powerhouse 2	0.0	0.0	0.0	0.0	0.0
D. Spill (kcfs)	204.5	221.2	209.8	214.4	110.4
% of River Flow	46.7	49.5	47.7	52.9	54.8
E. Water Temp *	56.5	57.4	56.8	58.0	60.6
F. % Saturation *	109.7	116.5	112.8	118.6	105.2

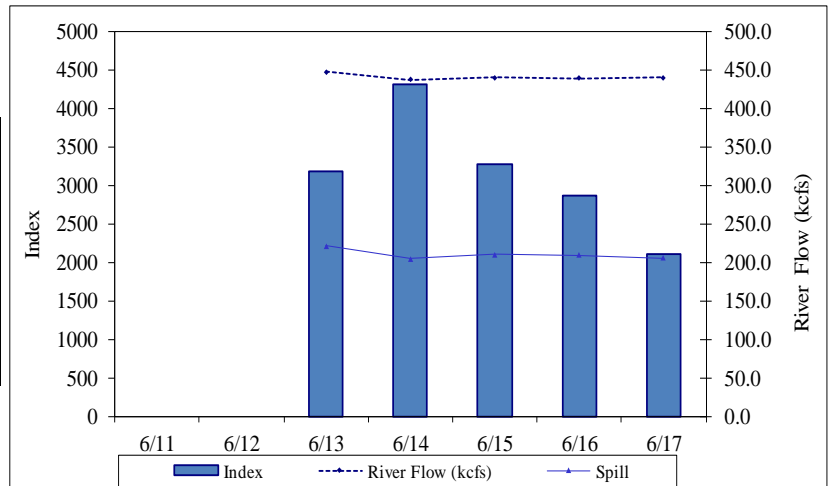
* TDG data from USGS forebay sensor, water temp from lab and USGS sensor.

% SAMPLE COMPOSITION		This Week	Last Week
YEARLING CHINOOK		13.8%	17.0%
SUBYEARLING CHINOOK		60.5%	56.3%
CHINOOK FRY		2.0%	0.3%
UNCLIPPED STEELHEAD		4.6%	5.0%
CLIPPED STEELHEAD		9.7%	5.1%
COHO		4.4%	6.6%
COHO FRY		0.0%	0.0%
SOCKEYE		4.9%	9.7%

YEARLING CHINOOK							SUBYEARLING CHINOOK					COHO				
End Date	Sample Rate	# Smpld	% Desc	% Mort	# Coll	Index	# Smpld	% Desc	% Mort	# Coll	Index	# Smpld	% Desc	% Mort	# Coll	Index
6/11																
6/12																
6/13	10.0%	30	0.0	0.0	300	595	99	4.0	0.0	990	1,965	9	0.0	0.0	90	179
6/14	6.8%	28	0.0	0.0	400	754	103	2.9	0.0	1,430	2,694	8	0.0	0.0	120	226
6/15	9.2%	22	0.0	0.0	220	422	99	2.0	0.0	1,030	1,976	6	16.7	0.0	70	134
6/16	10.0%	16	6.3	0.0	160	307	97	2.1	0.0	970	1,861	4	0.0	0.0	40	77
6/17	14.1%	13	0.0	0.0	90	169	96	1.0	0.0	695	1,308	8	0.0	0.0	45	85
Weekly		109	0.9	0.0	1,170	2,247	494	2.4	0.0	5,115	9,803	35	2.9	0.0	365	700
Season to date		4,654	2.3	0.1	47,239	113,756	1,191	1.2	0.1	16,325	36,783	481	1.9	0.2	5,730	13,571

End Date	Sample Rate	UNCLIPPED					STEELHEAD					CLIPPED					SOCKEYE				
		# Smpld	% Desc	% Mort	# Coll	Index	# Smpld	% Desc	% Mort	# Coll	Index	# Smpld	% Desc	% Mort	# Coll	Index	# Smpld	% Desc	% Mort	# Coll	Index
6/11																					
6/12																					
6/13	10.0%	6	1.0	0.0	60	119	4	0.0	0.0	40	79	12	0.0	0.0	120	238					
6/14	6.8%	5	0.0	0.0	70	132	6	0.0	0.0	100	188	10	0.0	0.0	170	320					
6/15	9.2%	9	1.0	0.0	90	173	18	11.1	0.0	210	403	8	12.5	0.0	80	153					
6/16	10.0%	2	0.0	0.0	20	38	28	0.0	0.0	280	537	2	0.0	0.0	20	38					
6/17	14.1%	14	0.0	0.0	95	179	21	23.8	0.0	135	254	7	0.0	0.0	55	103					
Weekly		36	5.6	0.0	335	641	77	9.1	0.0	765	1,462	39	2.6	0.0	445	854					
Season to date		330	2.1	0.0	4,296	10,902	1,113	6.6	0.2	11,848	28,617	1,135	3.2	0.2	23,931	59,603					

TOTAL						
End Date	Sample Rate	# Smpld	% Desc	% Mort	# Coll	Index
6/11						
6/12						
6/13	10.0%	160	3.1	0.0	1,600	3,175
6/14	6.8%	160	1.9	0.0	2,290	4,315
6/15	9.2%	162	4.3	0.0	1,700	3,261
6/16	10.0%	149	2.0	0.0	1,490	2,858
6/17	14.1%	159	3.8	0.0	1,115	2,098
Weekly		790	3.0	0.0	8,195	15,707
Season to date		8,904	2.8	0.1	109,369	263,232



Notes: Condition percentages are calculated from sample numbers.

Subyearling chinook and coho include fry.

Western Brook

	Macrophthalmia			Ammocoetes			Ammocoetes		
End Date	# Smpld	% Mort	# Coll	# Smpld	% Mort	# Coll	# Smpld	% Mort	# Coll
6/11									
6/12									
6/13	15	0.0	150	2	0.0	20	0	0	0
6/14	57	0.0	910	3	0.0	40	0	0	0
6/15	34	0.0	430	5	0.0	60	0	0	0
6/16	52	0.0	520	2	0.0	20	0	0	0
6/17	29	0.0	225	6	0.0	40	0	0	0
Weekly	187	0.0	2235	18	0.0	180	0	0	0
Season to date	303	0.3	3,641	37	0.0	417	0	0	0

SECTION 2. Smolt and Lamprey Condition Monitoring Summary

[illegible]

end dates	6/17	6/10
-----------	------	------

			INJURY					DISEASE and OTHER CONDITIONS					PREDATION	
MP- Macrophthalmia	End Date	SAMPLE #	BODY	EYE	HEAD	FIN	POPEYE	FIN HEM	Columnaris	FUNGUS	DEFORMITY	EYE HEM.	BIRD	FISH
This Week	6/17	187			0.5%	0.5%		0.5%		1.1%			13.4%	
Last Week	6/10	59	1.7%			1.7%		3.4%		5.1%			22.0%	
AP - Ammocoetes		SAMPLE #												
This Week	6/17	18											5.6%	5.6%
Last Week	6/10	16												

SECTION 3. Incidental Summary

	Bass Largemouth	Bass Smallmouth	Bluegill and Pumpkinseed	Bullhead	Carp	Catfish, Channel	Chiselmouth	Crappie species
This Week	1	6	5	0	1	0	0	0
Season to Date	1	12	11	1	2	0	0	5

	Dace - Longnose	Dace - Speckled	Chinook Jack	Goldfish	Lamprey Adult	Northern Pikeminnow	Peamouth	Perch Yellow
This Week	0	0	1	0	1	0	0	37
Season to Date	0	0	1	1	1	0	0	333

	Redside Shiner	Sand Roller	Sculpin species	Stickleback 3 spine	Sucker species	Shad Adult	Shad Juvenile	Sturgeon White
This Week	0	0	0	0	1	0	0	0
Season to Date	0	0	8	6	1	0	0	0

	Trout Bull	Trout Cutthroat	Trout Rainbow	Walleye	Whitefish Mountain	Siberian Prawn	Chum Salmon	Banded Killifish
This Week	0	0	0	6	5	24	0	0
Season to Date	0	0	0	24	5	100	0	5

SECTION 4. Facility Operations

Condition Monitoring at John Day Dam was originally scheduled to sample Monday through Friday until 15 June, reducing sampling to 3 days a week until river water temperatures reach 70 deg. F. Due to continued high flows and higher than average debris levels at the project, this schedule has been modified slightly to include one more week of Monday through Friday sampling. Samples will be taken from the Juvenile Bypass System between approximately 0700 and 1300 hrs. Collection, Index, and River flow estimates and averages are for the sample period only. The Condition Exams will target approximately 100 of the predominant species of out-migrant, currently Subyearling Fall Chinook (60.5% composition), Steelhead (14.3%), and Yearling Spring Chinook (13.8%). Debris at the separator bars and in the sample holding tank was moderate to high throughout the week and consisted of sticks, plastic, and pieces of terrestrial vegetation. In addition, juvenile Pacific lamprey passage continued to be higher than average throughout the week, coinciding with the high river flows.

SECTION 5. Research

Genetic fin clip samples were taken from 187 Pacific Lamprey *macrophthalmia* and 18 Pacific Lamprey ammocoetes for the Columbia River Inter-Tribal Fish Commission during this report period.

SECTION 6. Pictures



Mirror carp (*Cyprinus carpio*), a relatively rare genetic variety of common carp, approximately 115 mm fork length, sampled on 16 June, 2022 at the John Day Dam Smolt Facility.



Juvenile largemouth bass (*Micropterus salmoides*), approximately 70 mm fork length, showing slight hemorrhaging and partial descaling, sampled on 13 June, 2022 at the John Day Dam Smolt Facility.